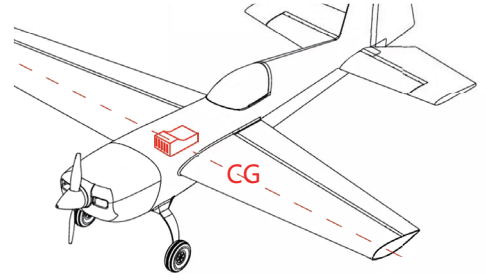
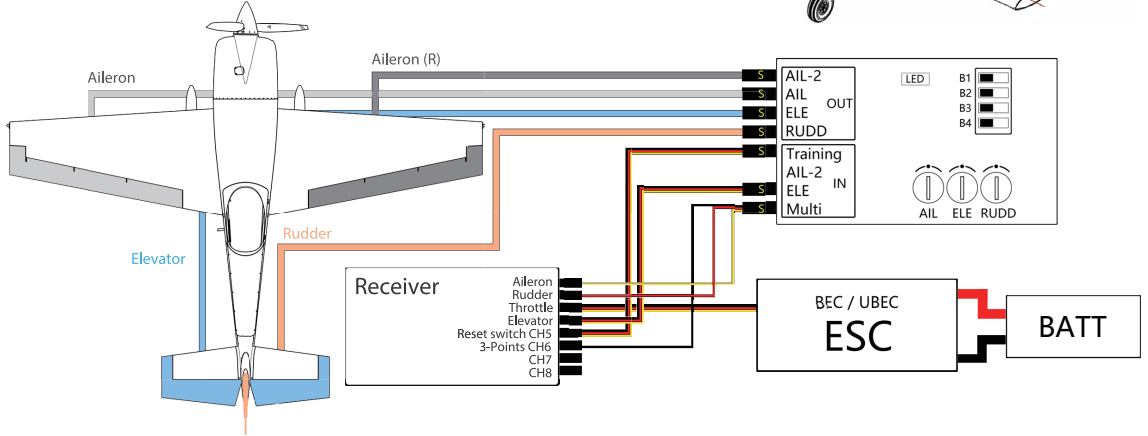


» EQUIPMENT INSTALLATION

Place the long side of the flight control device parallel to the fuselage, the label surface upwards, and as close to the centre of gravity as possible and glue firmly at the centre line.



For more detailed setting information please visit:
<http://www.macgregor.co.uk/gyro-setting.htm>



» MODE SELECTION/MODE DESCRIPTION

Mode-1
 Aileron Balance Mode

B1: [Red LED] B2: [Black LED] B3: [Black LED] B4: [Black LED]

CH6 3-Points switch: [Up arrow] [Down arrow]

Signal Light: [Red bar]

Roll speed - Limited

Mode-2
 Aileron Lock Mode

B1: [Red LED] B2: [Black LED] B3: [Black LED] B4: [Black LED]

CH6 3-Points switch: [Up arrow] [Down arrow]

Signal Light: [Red dots]

HOLD
 Roll speed - Limited

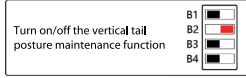
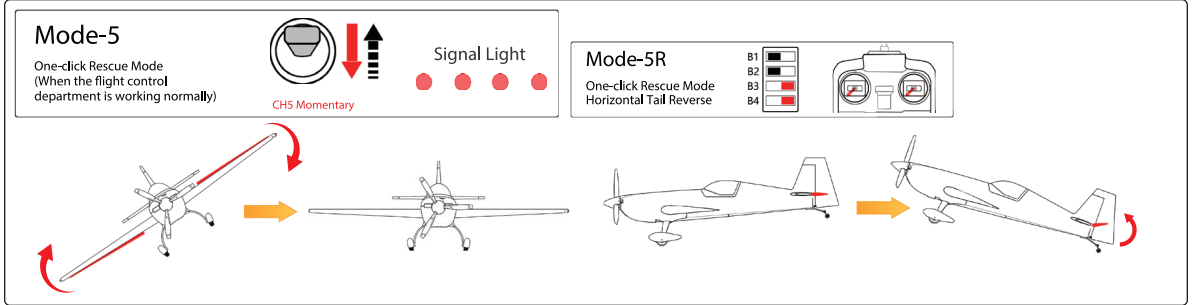
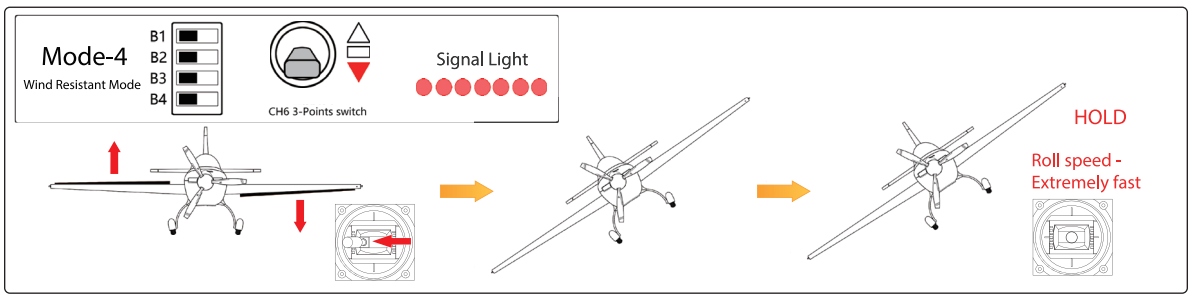
Mode-3
 Aileron Enhancement Mode

B1: [Black LED] B2: [Black LED] B3: [Black LED] B4: [Black LED]

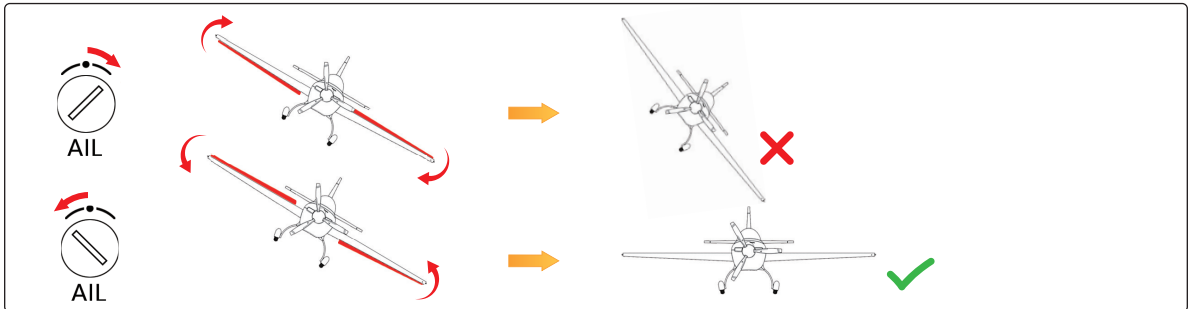
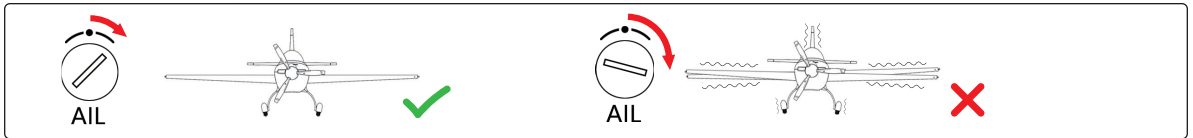
CH6 3-Points switch: [Up arrow] [Down arrow]

Signal Light: [Red bar]

HOLD
 Roll speed - Fast



SENSITIVITY SETTING



GYROSCOPE FLIGHT CONTROLLER




Product Specifications

Working voltage : 4.5-6V
 Response frequency : 100Hz
 Working temperature : 0-50°C
 Size : 43 x 28 x 15mm
 Weight: 11g

Caution In First Use

1. The voltage drop caused by the use of the servo may affect the stability of flight control. Please pay attention to ensure a stable working voltage.
2. For Delta wing/V-tail models, please turn off the internal mixing control of the remote control first.
3. If micro adjustments are made during flight, please perform power off and restart or neutral point calibration after landing.

 Not suitable for children under 14 years.

MADE IN CHINA

